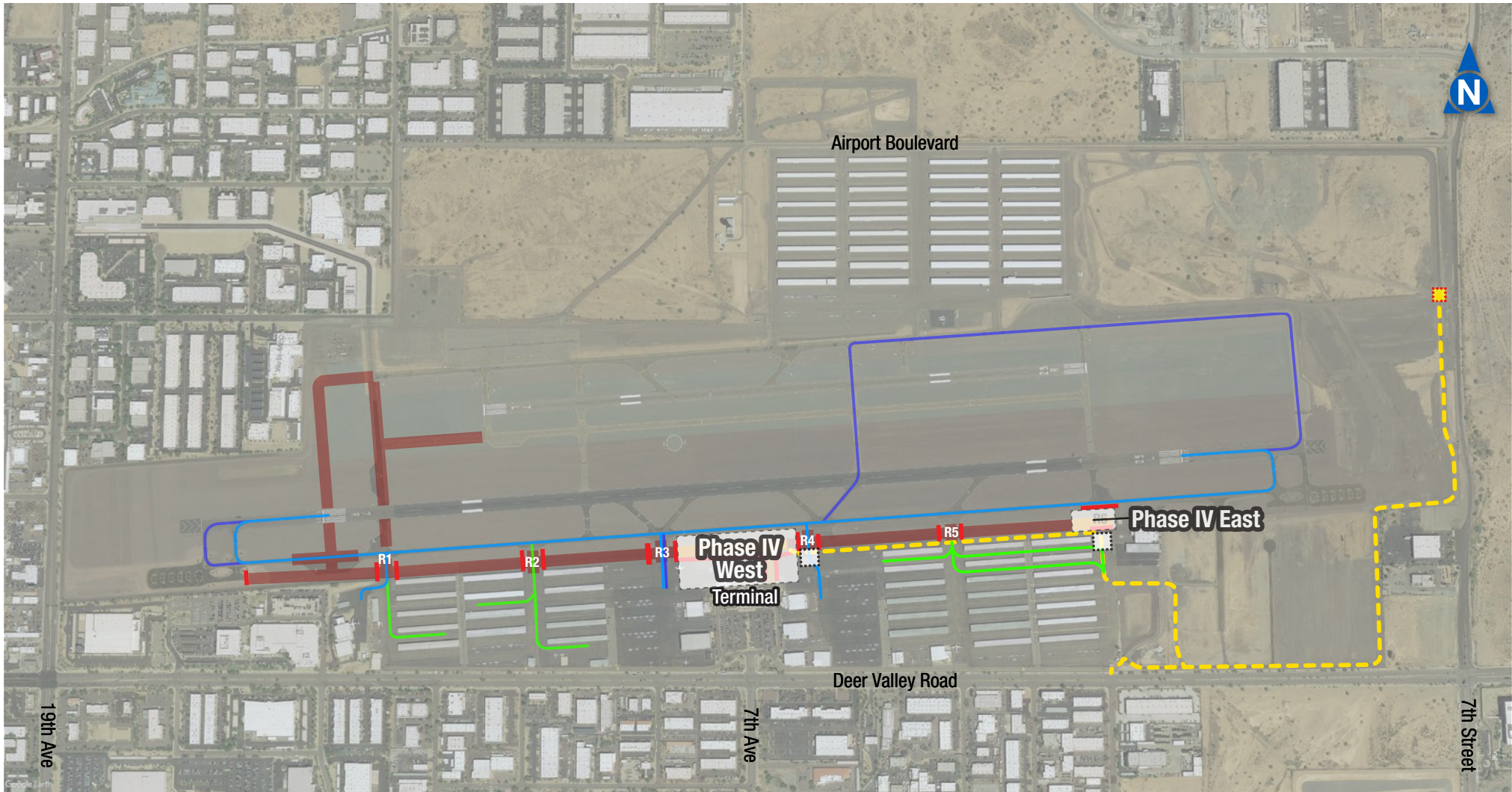


Construct Taxiway Delta – Phase IV

Monday, June 1 through Wednesday, July 15



- | | | | |
|----------------|------------|------------------|----------------|
| Small Aircraft | Work Zone | Flagging Station | Completed Area |
| Large Aircraft | Barricades | Gate Guard | |
| G4 or Larger | Haul Route | | |